

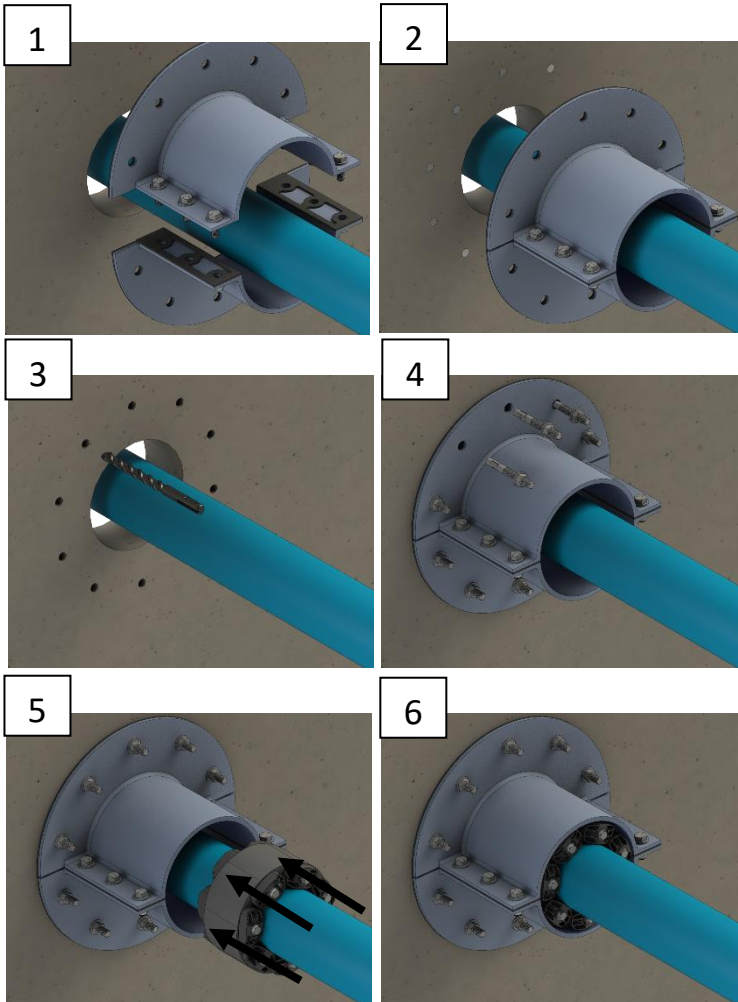


# ADVANCE

PRODUCTS & SYSTEMS, LLC

P.O. Box 60399  
Lafayette, Louisiana 70596-0399  
Toll Free: (800) 315-6009  
Phone: (337) 233-6116  
Fax: (337) 232-3860  
Email: sales@apsonline.com  
www.apsonline.com  
ISO 9001 Certified

## Externally Mounted Split Wall Sleeves Installation Instructions



### Recommended Materials:

- 1/2" Masonry Drill Bit
- Pipe Stand and Marker/Paint Pen
- Bolt Lubricant (for Stainless Bolts)
- Socket or Crescent Wrenches
- Compressed Air or Blow Out Bulb

**Prior to Starting:** The concrete form requires inspection to ensure that no imperfections or defects exist that may result in sleeve leakage. Flatness should also be verified using appropriate means.

1. **Aligning Wall Sleeve:** Position the sleeve around the pipe and align the flange faces even and sleeve ID concentric before tightening the side bolts to hand-tight plus a quarter turn.
2. **Marking Wall:** Use wall sleeve as template to mark anchor bolt locations. A pipe stand or support can be used to help with positioning. Center the sleeve around the pipe—against the wall—and mark the bolt hole locations to be drilled.
3. **Drilling Holes:** Drill using 1/2" masonry bit. Hole depth must be 2-1/4" min., 4" recommended. Clean holes of dust and debris to ensure proper function of anchor bolts using compressed air and a wire brush.
4. **Installing Anchor Bolts:** Assemble the nut and washer onto the anchor bolt with 1 to 2 threads showing above the nut. Using a hammer, drive the anchors through wall flange until fully embedded in the concrete form. In step increments, tighten anchor bolts up to 40 ft-lbs in a crisscross pattern.  
**See below for instructions on installing anchor bolts.**
5. **Innerlynx Installation:** Reference Innerlynx installation instructions to fully install and tighten the Innerlynx around the pipe and inside the wall sleeve.
6. **Sleeve Final Torque:** If possible, allow the sleeve seals to relax into position and seat themselves before applying the final torque on all anchor bolts, in a crisscross pattern, to 40 +/- 10 ft-lbs. Then, fully torque side bolts to 20 +/- 5 ft-lbs. (Torque is for dry Zinc-Plated bolts. For SS bolts, use a lubricant and multiply torque by 0.7).

