



Specially Developed
Proprietary Coating
System to Replace
Galvanizing



Prevent corrosion like this!

GAL-VO-PLAST® WALL SLEEVES

For Better Durability & Longer Life

INFINITY® WALL SLEEVE • EXTERNAL MOUNT SPLIT WALL SLEEVE
- SEE PAGE 2



ISO-9001:2015 CERTIFIED COMPANY - FM537405
WWW.APSONLINE.COM



New standard coating to replace galvanizing

Gal-Vo-Plast® Wall Sleeves: Superior Protection for Long-Lasting Performance

APS Gal-Vo-Plast® wall sleeves are engineered to provide exceptional durability and corrosion resistance, offering a longer lifespan than traditional galvanizing. This advanced coating is quickly becoming the new standard for protective finishes, making it the ideal choice for demanding environments.

Key Features:

- **Corrosion Resistance & Durability:** Gal-Vo-Plast® is designed to withstand harsh conditions, ensuring long-term performance and enhanced protection against corrosion.
- **Water Stop Technology:** Each sleeve features a 2-inch water stop that anchors the sleeve in place, ensuring a reliable, leak-proof seal even where water pressure or ingress is a concern.
- **Custom Sizing & Lengths:** Standard 12-inch lengths, with diameters ranging from 2" to 120". Custom lengths and diameters are available to meet specific project requirements, including varying wall thicknesses.
- **Adaptability:** Standard water stops are centered within the sleeve, but custom positioning is available for unique installation needs.

Benefits:

- **Reliable Performance:** The Gal-Vo-Plast® material ensures consistent, long-lasting protection against leaks, corrosion, and water damage.
- **Tailored Solutions:** Custom-manufactured to order, each wall sleeve meets the precise specifications of your project.
- **Versatility:** Ideal for applications in municipal water systems, industrial settings, and other environments where superior corrosion resistance and water sealing are critical.

APS Gal-Vo-Plast® wall sleeves are the trusted choice for reliable, durable pipeline protection in a variety of industries, delivering peace of mind and dependable performance.



Gal-Vo-Plast® vs. Galvanized Wall Sleeve

Gal-Vo-Plast®

- More durable
- Longer installation life
- All coating performed in-house
- Considerably more economical
- Faster availability, especially for custom sized wall sleeves

Galvanizing

- Less resistant to corrosion
- More expensive
- Shorter installation life
- Must be sent out of factory to be galvanized
- Custom wall sleeves usually require an additional two weeks to galvanize

Note: Galvanizing is no longer offered by APS.



Gal-Vo-Plast® coating Test Results

Two wall sleeves with two different types of protective coatings were submitted for testing at an independent lab. This test consisted of a 500-hour exposure test (equal to two years) in a B 117 salt fog chamber. This test has been used to a considerable extent for the purpose of comparing different materials and finishes.

One sample had hot dipped galvanized coating and the other had Gal-Vo-Plast® coating. The coatings were of uniform thickness and showed good adhesion.

After testing, the submitted wall sleeves were removed from the salt fog chamber for visual examination.

The visual examination revealed no indications of oxidation on any of the exposed surfaces of the Gal-Vo-plast® coating. Figure 3 shows the Gal-vo-plast® coated wall sleeve after testing.

The visual examination revealed considerable oxidation of the galvanized coating on all exposed surfaces. Figure 4 shows the galvanized wall sleeve covered with white zinc oxide.

Copies of testing are available upon request.



Figure 1: Gal-vo-plast® Wall Sleeve submitted for testing



Figure 2: Galvanized Wall Sleeve submitted for testing

after 500 hours of harsh testing

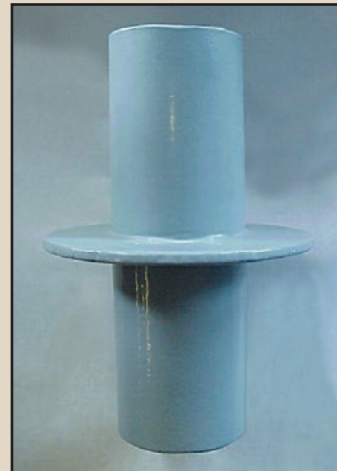


Figure 3: Gal-vo-plast® Wall Sleeve after 500 hours of exposure



Figure 4: Galvanized Wall Sleeve after 500 hours of exposure



Gal-Vo-Plast® Repair Kit

Easily & effectively repair your Gal-Vo-Plast® wall sleeve coating in the field with the Gal-vo-plast repair kit, consisting of a pencil torch, a sanding pad, and the same durable Gal-Vo-Plast® powder coating, in stick-form, that is used to coat the Gal-Vo-Plast® wall sleeves.

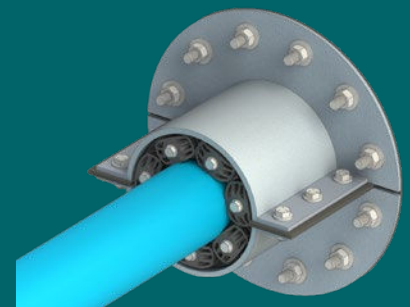
Easy repair by one person.

Additional types of wall sleeves available by APS:

1. **Infinify®** are 16" long, made of HDPE with an intergrated water stop
2. **External Mount Split Wall Sleeve** available in Gal-Vo-Plast® coated steel, stainless steel, or carbon steel.
3. **Steel Wall Sleeves** made of primed carbon steel or stainless steel with or without welded steel water stop



Infinify® HDPE Wall Sleeve



External Mount Split Wall Sleeve

For a leak free performance, couple APS wall sleeves with Innerlynx® Modular Mechanical Seals.

ORDER INSTRUCTIONS

- Material
- Nominal Sleeve Size
- Length of Sleeve or Wall Thickness
- Position of Water Stop

OTHER PRODUCTS AVAILABLE

- Flange Isolating Gasket Kits
- Integra® Series Gaskets
- Kleerband® Flange Band Protectors
- Kleergel® Corrosion Inhibiting Grease
- Radolid® Nut & Bolt Protection Caps
- Casing Spacers & End Seals
- ApogeeAero® Roller Casing Spacers
- Bore & Duct Bank Spacers
- Innerlynx® Modular Mechanical Seals
- Wall Sleeves
- Foreman Nite Caps
- UBolt-Cote® & Atlas Pipe Support® Pads
- IsoJoint® Monolithic Isolating Joints
- Safety Spray Shields



PO Box 60399

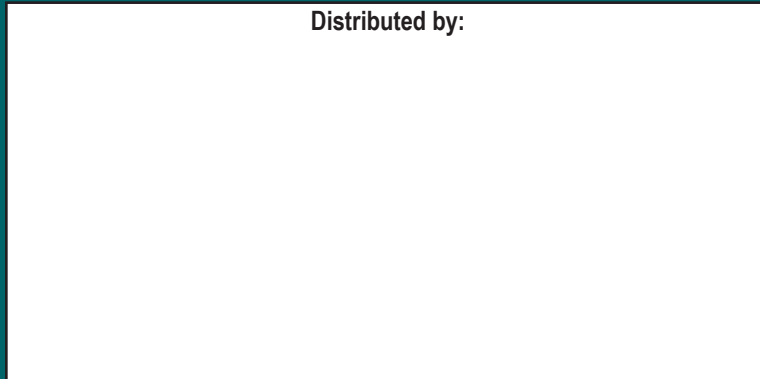
Lafayette, Louisiana 70596-0399

800-315-6009 • 337-233-6116 • Fax 337-232-3860

E-Mail: sales@apsonline.com • Website: www.apsonline.com



Distributed by:



Advance Products & Systems, LLC is not responsible for errors printed in this brochure.

Advance Products & Systems, LLC shall repair or replace (within the limitations of such applicable express written warranty as may be issued by it) any product or portions thereof, which prove to be defective in workmanship or material for a period of 12 months from shipment date. The foregoing in lieu of all warranties, express or implied, and all other obligations or liabilities on the part of APS, on account of the product which it may sell. In no event shall APS be liable for consequential or special damages: nor except as it may otherwise specifically agree in writing, installation, or other work which may be done upon or in connection with the product by APS/ the distribution / dealer or others. THE LIMITED WARRANTIES PROVIDED IN THIS AGREEMENT AND THE OBLIGATIONS AND LIABILITIES OF APS ARE THE ONLY WARRANTIES MADE BY APS AS TO THE PRODUCT. APS MAKES NO EXPRESS OR OTHER IMPLIED WARRANTIES, BY COURSE OF DEALING, USAGE OF TRADE, MERCHANTABILITY, FITNESS FOR A PARTICULAR USE (WHETHER GENERAL OR SPECIFIC), OR OTHERWISE.

REV 122724