

# Product Summary

Accessories for your industrial & mechanical pipeline needs.



## Flange Isolating Gasket Kits

Full, raised face, or ring joint gaskets; in Buna-N faced phenolic, Durabla, NEMA grade G-3, G-7, G-10 & G-11 with accompanying isolating double washers of phenolic, Mylar, Nomex, G-10 & one piece bolt sleeves of Minlon. Trojan and quad seal G-10 gaskets are also NSF-61 approved. Sizes available from 1/2" to 150" diameter. With accompanying sleeves and washers to fit any application.



## Kleerband® Flange Protectors

Prevents corrosion from developing between flanges on piping systems and allows for visual inspection of flange cavity. Clear extruded polymer band with air tight D-seal, grease injection fitting and relief vent plug. Kleerband® wraps around the flange and is also available as a stainless steel gasket. All sizes available.



## Kleergel®

This high-performance grease executes well at high and low temps (-50° F to 375° F). Dielectric and hydrophobic, NSF H-1 certified "food-grade" lubricant. Non-flammable, non-staining, non-toxic, and environmentally safe.



## Radolid® Nut & Bolt Protection Caps

Bolt and nut protection caps are used to prevent corrosion on fasteners. Injection molded of low density polyethylene. Available in sizes from 1/4" to 3 3/4" bolt diameter.



## Casing End Seals

End seals are available in pull-on, wrap-around Buna-N, zipper and molded styles in eccentric and concentric types for all size carrier/casing pipes, and molded pull-on for concentric installations only.



## AMCE Molded Cone End Seals

Full, molded, conical end seals with easy to read size indicators for versatile installation on a variety of carrier sizes. Each end seal comes with a pair of quick adjust stainless steel band straps that cover all sizes within the range, so no custom-made items are needed. The end seals are manufactured from 1/8" thick durable, chemical resistant EPDM rubber.



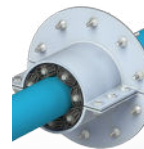
## Innerlynx® Modular Mechanical Seals

Molded rubber pipe wall penetration seals can be used in treatment plants, valve vaults, tanks and containment dikes. Available in EPDM, nitrile, silicone, and UL three hour fire-rated styles.



## Gal-vo-plast® Wall Sleeves

Manufactured of Gal-vo-plast® coated steel, stainless steel, painted steel and plastic in sizes 2" - 100".



## External Mount Split Wall Sleeves

Designed for sealing pipe penetrations through walls, floors, and ceilings in atypical scenarios. It can be installed after cement has been poured. Material types offered are Gal-vo-plast® steel, stainless steel, or plain steel.



## Infinity® Wall Sleeves

Manufactured of HDPE in sizes 2" - 25". Designed for concrete poured barriers to construct a circular penetration through walls, floors, and ceilings. Used with Innerlynx® modular mechanical seals.



## UBolt-Cote® & Atlas® Pipe Support Pads

Polyolefin or fusion applied polymer coated UBolts used for corrosion resistance and cathodic protection. Atlas® pipe support pads provide zero water absorption, UV protection and minimal contact between pad and pipe, eliminating crevice corrosion. High temperature HT & XT materials available.

## Polyethylene Spacers

Manufactured from injection-molded, high density polyethylene. Used to support and space a section of pipe inside a secondary pipe on dual containment systems. Grooves molded into the inner surface prevent slippage and cold flow. Sizes available from 2" to 12" with a standard runner height of 1".



## Raq-gard®

Lightweight, injection-molded, glass-filled polymer isolators that eliminate corrosion between pipes and I-beams.



REV 120522