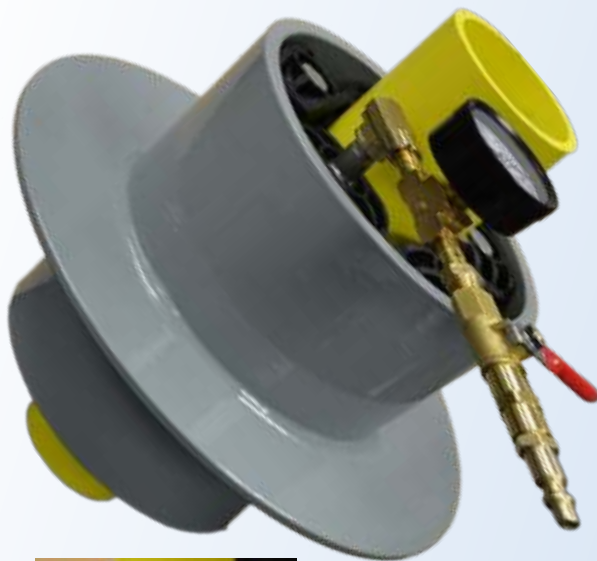
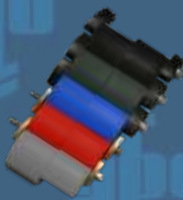


TEST PORTS

for **INNERLYNX**®
MODULAR MECHANICAL SEALS



A pressure monitoring port that has been integrated into the Innerlynx® assembly, will not jeopardize the integrity of the sealing capability, unlike other testing methods. APS Test Ports are used to test or monitor the operating pressure of an Innerlynx® application.

- 1/8" National Pipe Thread (NPT) nipple TIG welded to the head side
- Requires the use of a deep well socket to install
- Rated at 40 psig, tested at 92 feet of head pressure



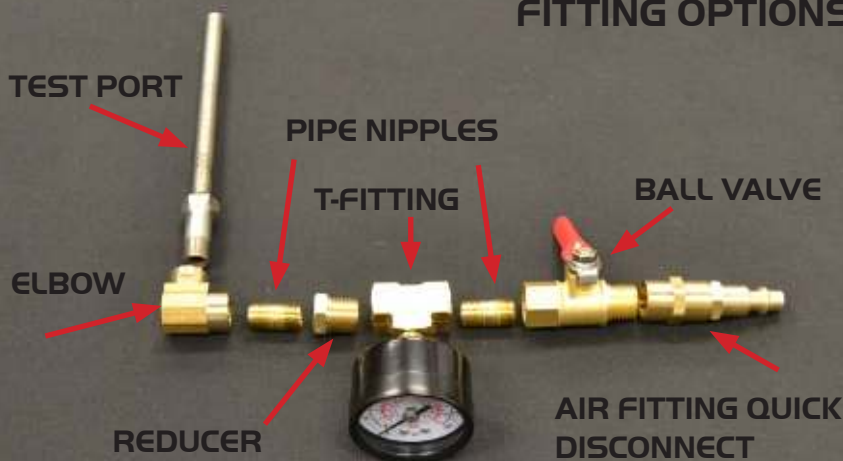
Constructed of 316 Stainless



| Innerlynx® Model Number | Test Port Part Number |
|-------------------------|------------------------|
| IL200 | NOT AVAILABLE |
| IL265 | NOT AVAILABLE |
| IL275 | NOT AVAILABLE |
| IL300 | TEST PORT 5/16 X 4 |
| IL310 | NOT AVAILABLE |
| IL315 | TEST PORT 5/16 X 4 |
| IL325 | TEST PORT 5/16 X 5 |
| IL340 | TEST PORT 5/16 X 4 1/2 |
| IL360 | TEST PORT 5/16 X 4 1/2 |
| IL400 | TEST PORT 3/8 X 6 |
| IL410 | TEST PORT 3/8 X 5 1/2 |
| IL425 | TEST PORT 3/8 X 6 |
| IL440 | TEST PORT 10MM X 6 |
| IL475 | TEST PORT 3/8 X 5 1/2 |
| IL500 | TEST PORT 1/2 X 6 |
| IL525 | TEST PORT 1/2 X 6 |
| IL575 | TEST PORT 1/2 X 6 |
| IL600 | TEST PORT 1/2 X 8 |
| IL625 | TEST PORT 12MM X 7 |
| IL650 | TEST PORT 1/2 X 6 |
| IL700 | TEST PORT 12MM X 7 |

**PATENT PENDING

FITTING OPTIONS



APS only supplies the test port, it does not include additional items listed above.

REV 081622



FOR MORE INFORMATION
PLEASE CONTACT US
1-800-315-6009



WWW.APSONLINE.COM

SALES@APSONLINE.COM