

Isolating Gaskets

Flange Isolating Gasket Kits



Sizes: 1/2" - 144"

- Electrical isolation that prevents galvanic corrosion and provides leak-proof sealing at flange connections
- Materials: Durabla, NEMA Grade G-3, G-7, G-10, G-11
- Duplex four-seal G-10 gasket certified to NSF-61 available

Water Meter Isolating Gaskets

- NSF-61 approved EPDM or PTFE sealed isolating gaskets
- Available in 1.5" and 2" water meter sizes
- Prevents galvanic corrosion and electrically isolates dissimilar metals



Flange Protection



Sizes: 1/2" - 144"

Kleerband® Flange Protector

- Prevents corrosion and foreign material from lodging between flange faces
- Clear polymer band allows visual inspection of flange cavity
- Features: Airtight D-seal, grease injection fitting, relief vent plug

Kleergel® Corrosion Inhibitor Grease

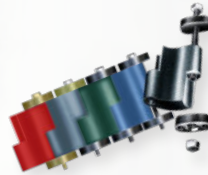
- Non-flammable, non-staining, non-toxic synthetic grease
- Temperature Range: -50°F to 375°F
- Properties: 100% waterproof, dielectric



Radolid® Nut & Bolt Protection Caps

- Reusable caps manufactured from UV-resistant polyethylene that prevent fastener corrosion
- Sizes: 1/4" - 3/4" bolt diameter

Innerlynx® & Wall Sleeves



Sizes: 1/2" - 144"
(21 sizes available)

Innerlynx®

- Modular Mechanical Seals
- Absorbs vibration, shock, and sound while sealing penetrations
- Electrically isolates carrier pipe from penetrated structure
- Materials: EPDM, nitrile, silicone, and UL three-hour fire-rated

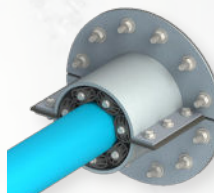


Infinity® Wall Sleeves

- Lightweight HDPE wall penetration barriers for floors, walls, and ceilings
- Designed for circular penetrations with reliable sealing performance
- Sizes: 2" - 25" | Material: HDPE
- Withstands 40 psig when combined with Innerlynx® seals

Gal-Vo-Plast® Wall Sleeves

- Superior seal vs. core drilled holes
- Proprietary coating for enhanced durability and longer service life
- Sizes: 2" - 120" diameter
- Materials: Stainless steel, carbon steel, custom lengths available



External Mount Split Wall Sleeves

- Designed for sealing pipe penetrations in atypical scenarios
- Can be installed after concrete

Materials: Gal-Vo-Plast® coated, stainless, or plain steel

Monolithic Isolating Joint



Sizes: 1/2" - 150"

IsoJoint®

- Permanent cathodic isolation joint for pipeline zone separation
- Rated ANSI 150# - 2,500# and up to API 10,000#
- API 5L Grade B-X70 carbon or stainless steel



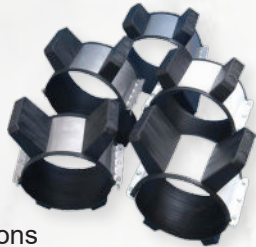
Polyethylene Spacers



- Supports carrier pipe inside secondary pipe for dual containment systems
- Grooved inner surface prevents slippage and cold flow
- Sizes: 1"–60" (standard 1" runner height)
- Material: Injection-molded HDPE

Metal Casing Spacers

- Centers carrier pipe inside casing
- Reliable, easy-to-install alternative to wooden skids
- Stainless or carbon steel band options (8" and 12" widths)
- Glass-filled or stainless roller options
- Sizes: 3" –120" | Modular runner heights: 1"–6"



ApogeeAero® Anti-Corkscrewing Roller



- Heavy-load rollers designed exclusively for APS casing spacers
- Stops corkscrewing for faster installs
- Reduces coefficient of friction by 70%
- Increases installation speed from 3 ft/min to 15+ ft/min

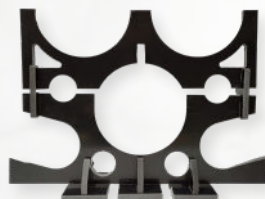
Bore Spacers



- Supports and cradles conduit for easier installation
- Allows optimal grout flow, eliminating voids
- Maintains conduit alignment for reduced installation time
- Designed for conduit-in-casing applications

Duct Bank Spacers

- Designed for open-cut segments and trench installations
- Provides reliable conduit spacing without added bore spacer features
- Does not require grout holes or rollers



Single or multi-piece designs

Casing End Seals



- Flexible 1/8" thick synthetic rubber seals for carrier-to-casing closure
- Fits any pipe size combination
- Styles Available: AC Pull-On, AW Wrap-Around, AZ Zipper, AM Molded, AMCE Cone, APC Cluster
- Secured with stainless banding

Foreman Nite Caps

- Lightweight, economical pipe plugs that prevent pipeline contamination
- Field tested for durability and long-lasting performance
- Easy to install and ideal for temporary protection
- Sizes: 2" –48"



Water & Wastewater Applications

APS products are engineered to support municipal water and wastewater infrastructure in both new construction and system rehabilitation projects.

Typical Applications Include:

- Potable water distribution systems
- Wastewater collection and force mains
- Water meter and service line installations
- Treatment plants and pump stations
- Vault and wall penetrations
- Casing support and pipeline alignment
- Flange protection and corrosion control systems



Designed to Prevent

- Galvanic corrosion between dissimilar metals
- Leakage at wall and vault penetrations
- Crevice corrosion under pipe supports
- Debris intrusion during construction
- Stray current damage in buried systems

Need help selecting the right solution for your project? **800-315-6009** or email sales@apsonline.com