

Product Summary

Accessories for your water pipeline needs.



Flange Isolating Gasket Kits

Full, raised, or ring joint gaskets; in Buna-N faced phenolic, Durabla, NEMA Grade G-3, G-7, G-10 and G-11 with accompanying isolating double washers of phenolic, Mylar, Nomex, G-10 and one-piece bolt sleeves of Minlon. The Trojan and Quad Seal G-10 gaskets are NSF-61 approved. Sizes from 1/2" to 150# diameter.



Kleerband® Flange Protectors

Prevents corrosion from developing between flanges on piping systems and allows for visual inspection of flange cavity. Clear-extruded polymer band with air tight D-seal, grease injection fitting and relief vent plug. Kleerband® wraps around the flange and is also available as a stainless steel gasket. All sizes available.



Kleergel®

This high-performance grease executes well at high and low temps (-50° F to 375° F). Dielectric and hydrophobic, NSF H-1 certified "food-grade" lubricant. Non-flammable, non-staining, non-toxic, & environmentally safe



Radolid® Nut & Bolt Protection Caps

Bolt and nut protection caps are used to prevent corrosion on fasteners. Injection molded of low density polyethylene. Available in sizes from 1/4" to 3 3/4" bolt diameter.



Casing Spacers

Field changeable modular runners are available, as well as rollers. Available in stainless steel and fusion coated polymer steel bands with 8" and 12" widths, sizes 2" to 120".



Casing End Seals

End seals are available in pull-on, wrap-around Buna-N, zipper, and molded styles in eccentric and concentric types for all size carrier/casing pipes, and molded pull-on for concentric installations only.



Foreman Nite Caps

Cast aluminum temporary pipe plugs, sizes 2" to 48". Prevents unwanted foreign materials, small animals, mud or water from contaminating a pipeline.



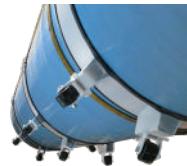
AMCE Molded Cone End Seals

Full, molded, conical end seals with easy to read size indicators for versatile installation on a variety of carrier sizes. Each end seal comes with a pair of quick adjust stainless steel band straps that cover all sizes within the range, so no custom-made items are needed. The end seals are manufactured from 1/8" thick durable, chemical resistant EPDM rubber.



ApogeeAero® Anti-Corkscrewing Roller Casing Spacers

Anti-corkscrewing rollers manufactured exclusively for APS casing spacers that can carry heavy loads while reducing the coefficient of friction by 70 percent; thus, increasing the average speed of installation from 3 ft. per minute to 15+ ft. per minute.



Bore Spacers

Designed to support and cradle conduits for ease of installation, allowing optimal free flow of grout and eliminating voids. Maintain accurate conduit position and alignment that will result in reduced installation time.



Duct Bank Spacers - Single or Multi-piece

Used at open-cut segments or in open trenches and do not require added features associated with bore spacers, such as grout holes or rollers



Innerlynx® Modular Mechanical Seals

Molded rubber pipe wall penetration seals can be used in treatment plants, valve vaults, tanks and containment dikes. Available in EPDM, nitrile, silicone, and UL three hour fire-rated styles.



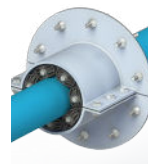
Gal-vo-plast® Wall Sleeves

Manufactured of Gal-vo-plast® coated steel, stainless steel, painted steel and plastic in sizes 2" - 100".



External Mount Split Wall Sleeves

Designed for sealing pipe penetrations through walls, floors, and ceilings in atypical scenarios. It can be installed after cement has been poured. Material types offered are Gal-vo-plast® steel, stainless steel, or plain steel.



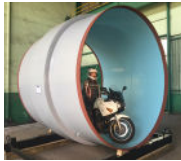
Product Summary

Accessories for your water pipeline needs.



Infinity® Wall Sleeves

Manufactured of HDPE in sizes 2" - 25". Designed for concrete poured barriers to construct a circular penetration through walls, floors, and ceilings. Used with Innerlynx® modular mechanical seals.



Isojoint® Monolithic Isolating Joint

Monolithic isolating joint available in 1/2" to 150" diameter. ANSI 150# to 2,250# and up to API 10,000#. API 5L grade B to X70 materials. Manufactured in all types of carbon and stainless steel.

REV 120622